

***R*Vision** LLC 

PUMPING STATION™

SET-UP AND CONFIGURATION



© RVision, LLC
2365 A Paragon Dr., San Jose, CA 95131
Phone 408-437-5777 • Fax 408-437-9923

Packing List:

1. SEE™ pan/tilt/zoom camera
2. PUMP™ encoder
3. Power cable for cigarette lighter.
4. Hex wrench for Tamper screw
5. P1 Cable
6. Manual

Warning:

Minimum processor speed required - 1.0 Ghz

1. Secure the PUMP™ to either a tripod or to a Thule like fastening bar.



2. Line up the foot of the SEE with the shoe at the top of the PUMP and slide it in until it snaps into place.



3. Connect provided cable to the P1 port on the back of the PUMP.



4. Connect Shielded Data end (white) to the Hub as well as the Ethernet



cable (red) from your PC.

5. Plug the cigarette lighter adapter into the power end of the P1 cable and then into the power supply.



note : When power is connected, the SEE™ will go through its calibration dance.

6. Load the DLL and the pSEE™ software on the PC (provided in the CD provided)



pSEE_22100701.exe

7. **Computer Configuration set-up for PUMP demo without LAN access**
Hub is required and both the PUMP and the PC, or multiple PC's are plugged in.

Identify PUMP address: 192.168.254.1XX (XX being the last two digits of serial number of the PUMP)

Change computer address:

- Go to 'Control Panel'

- Click on Network Connection

- Choose Local LAN connection (different for every type of OS)

- Right click on Properties

- Choose TCP/IP Properties

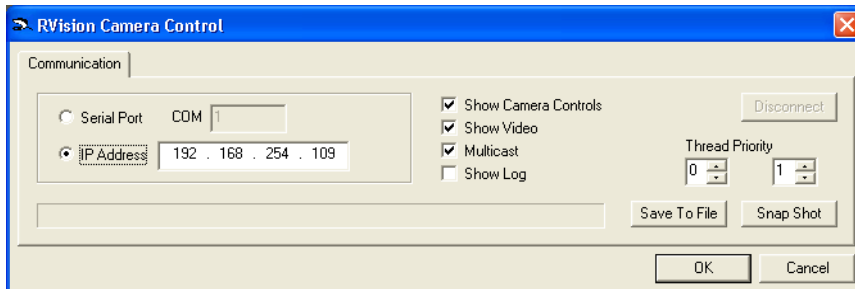
 - IP 192.168.254.2XX

 - Subnet (default) 255.255.255.0

 - Default Gateway 192.168.254.1XX

Click OK and close

8. Boot pSEE software, and this screen appears.



Serial Port- if a direct connection is made from the PUMP to the PC.
COM- Port in which the PUMP is connected.

IP address - IP address of the pump (shipped as 192.168.254.100).

Show camera control- only one PC can control camera at a time.

Show video – even without control you can view

Multicast – Gives ability to others to view camera

Show Log – Logs all communication, used for de-bugging.

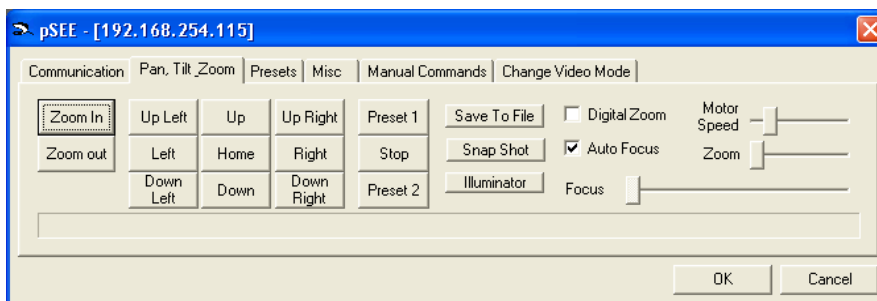
Thread priority – diagnostic use only, do not use.

Save to File – viewer can save video being shot to any file

Snap shot – viewer can click to take a snap shot to be stored.

Disconnect – close application and disconnect.

9. Camera control screen with tabs.



Zoom In - Zooms to the spot in the middle of the view

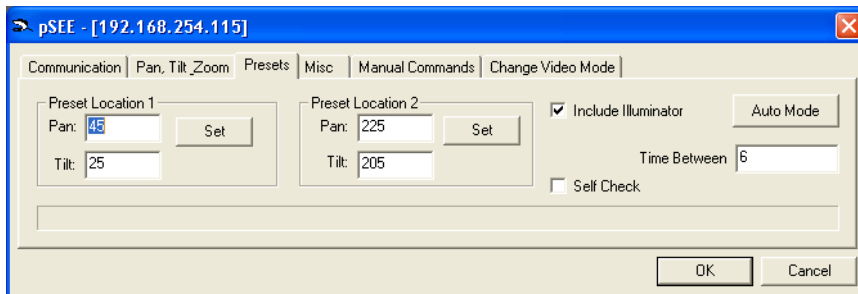
Zoom Out - Zooms back out.

Up left - Moves camera up and left

Up – Tilts camera up and around to 240°

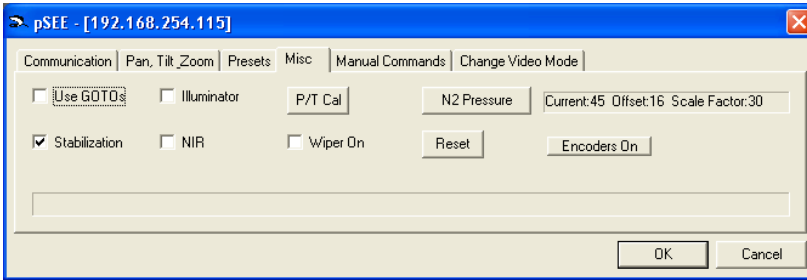
Up Right – moves camera up and right
Left – pans camera left to 440°
Home – send camera directly to the designated home position.
Right - Pans camera to the right to 440°
Down Left – Moves camera down and to the left
Down - Tilts camera down.
Down Right – moves camera down and to the right.
Preset 1 – Moves camera to a pre-set location #1
Stop – Stops all camera motion
Preset 2 – Moves camera to pre-set location #2
Save to File – Saves the video being shot to any file.
Snap Shot – Capture a quick snap shot while video is running.
Digital Zoom – Turn the 12X digital Zoom on or off.
Auto Focus – Turn Off or ON
Focus Bar – used to manually focus the camera.
Motor Speed – Speed of the motor can be raised up or down.
Zoom Speed – Zoom can be increased or decreased.

10. Presets tab.



Pan – What degree camera will go to right or left.
Tilt - What degree camera will move up or down.
Set – Click once the presets have been set.
Include Illuminator – check if Illuminator is required for those presets.
Auto Mode – Camera will move from preset 1 to 2.
Time Between - Number of seconds from one location to the next.

11. Misc. tab



Stabilization – Check to turn on and un-check to turn off.

Illuminator(optional) – Check to turn on and un-check to turn off .

NIR – Turns camera from color to black and white enabling night vision.

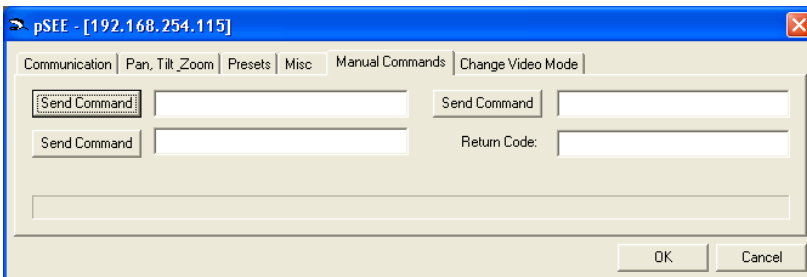
P/T Cal – used for internal diagnostics

Wiper On – Optional wiper can be turned on and off.

N2 Pressure – Nitrogen pressure inside the camera can be monitored and displayed in the bar to the right.

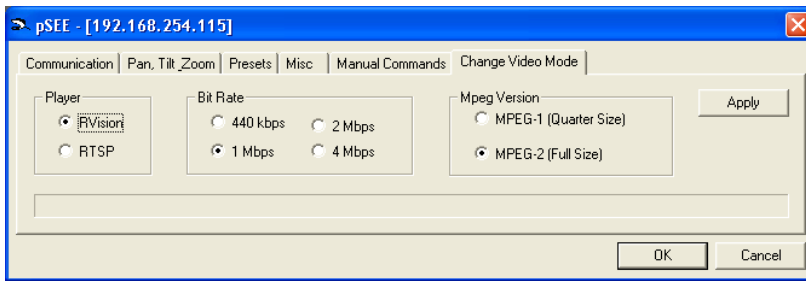
Reset – used for internal diagnostics

12.Manual Commands Tab



This screen would only be used to send diagnostic commands to the camera.

11.Change video mode tab.



RVision – default for the Player

RTSP – for use with Cisco player

Bit Rate – 4 different data rates, 400 Kbps, 1 Mbps, 2 Mbps, and 4 Mbps.
Can be increased to 15 Mbps.

MPEG Version – MPEG 1 compression will give a smaller screen.

MPEG 2 offers a larger screen and much higher fidelity. Click apply

Important:

After the Video mode has been changed the connection to the PUMP will be lost.

Close the application **and wait 60 seconds** until the camera has gone through the calibration dance completely. It will not be finished until the camera is pointed in the 'Home' position.

After the camera is home, re-boot the application and click OK.

The PUMP will remain at the same mode until you change it again, even though on the change video tab the default (1 Mbps, MPEG2) will be reflected.

Control and monitoring of the video can be done from any PC or lap-top with over 1 Ghz of power.

Trouble shooting

If PUMP does not respond when application is launched, check network settings.

Possible scenarios:

The camera needs to complete the calibration dance and return to the 'home' position.

The address of the PUMP does not match your network set-up

Call Tech support at RVision @ 408-437-5777

RVISION LIMITED WARRANTY AND LIMIT OF LIABILITY

For a period of one (1) year from the date of purchase, RVISION warrants that each of the component parts of SEE™ will not malfunction, destruct, disconnect or fail to operate when operated properly according to furnished instructions. RVISION warrants that the SEE mount will not become disconnected from the rack, bar or other device to which the product is attached when mounted in accordance with furnished instructions; except that this warranty does not apply to disconnection resulting from impact to the product, mount, rack, bar or other mounting device or to the mobile site, motor vehicle, or stationary installation site by collision, traffic accident, vandalism, calamity, or Act of God. RVISION does not warrant the use of any particular rack or mount by any particular manufacturer for use in mounting the product to the motor vehicle or other mobile or stationary site. This warranty does not cover damages resulting from malfunction, defect, destruction, or failure of the rack, bar or other device to which the camera is mounted to a motor vehicle or other mobile or stationary site.

This warranty does not cover adjustment of customer-operated controls as explained in furnished instructions. RVISION makes no warranty (a) that a motor vehicle or any other mobile site may be operated safely and with due care by use of the product, whether or not explained in or authorized by furnished instructions, or (b) as to the frequency an operator may make viewing changes by manual selections on the LOOK display/control, or as to the frequency or length of continuous time, if any, an operator may view and concentrate mental attention on the LOOK control/display and contemporaneously operate the motor vehicle ~ or other mobile site to which it is installed ~ and at the same time operate the motor vehicle or other mobile site in a safe manner and with due care and circumspection under any driving, roadway, traffic or other conditions or circumstances.

RVISION does not warrant that it is lawful to operate the product installed on a motor vehicle while contemporaneously operating the motor vehicle on public streets and highways of any state or locality in the United States or in any other country.

Warranty

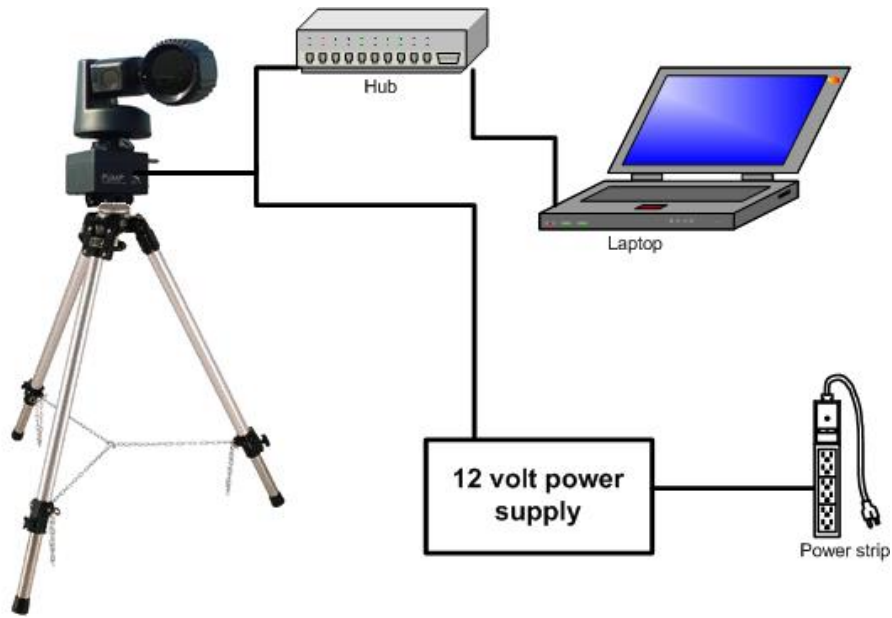
This warranty does not apply to uncrating, setup, installation, removal of the product or any of its components for repair or reinstallation of the product after repair.

This warranty does not apply to repairs or replacements necessitated by any cause beyond the control of RVISION including, but not limited to, any malfunction, defect or failure caused by or resulting from unauthorized service or parts, improper maintenance, operation contrary to furnished instructions, shipping or transit accidents, modification or repair by the user, abuse, misuse, neglect, accident, incorrect power line voltage or connection, defective rack or other mount not provided by RVISION, fire, flood or other Acts of God, or normal wear and tear. TFT Display component is warranted for 90 days.

This warranty is limited to either repair or replacement of the product by RVISION, the choice as to which is in the exclusive discretion of RVISION. The foregoing is in lieu of all other expressed warranties and RVISION does not assume or authorize any party to assume for it any other obligation or liability.

THE DURATION OF ANY WARRANTIES WHICH MAY BE IMPLIED BY LAW (INCLUDING THE WARRANTIES OF MERCHANTABILITY AND FITNESS) IS LIMITED TO THE TERM OF THIS WARRANTY. IN NO EVENT SHALL RVISION BE LIABLE FOR SPECIAL, INCIDENTAL, OR CONSEQUENTIAL DAMAGES ARISING FROM (A) THE OWNERSHIP OR USE OF THE PRODUCT, OR FOR ANY MALFUNCTION, DELAY, FAILURE OR INADEQUACY OF THE PRODUCT DURING ANY USE AND CONDITIONS, WHETHER OR NOT AUTHORIZED BY FURNISHED INSTRUCTIONS; OR (B) ANY DELAY IN THE PERFORMANCE OF ITS OBLIGATIONS UNDER WARRANTY DUE TO CAUSES BEYOND RVISION'S CONTROL.

SOME STATES DO NOT ALLOW LIMITATIONS ON HOW LONG AN IMPLIED WARRANTY LASTS AND/OR DO NOT ALLOW THE EXCLUSION OR LIMITATION OF CONSEQUENTIAL DAMAGES, SO THE ABOVE LIMITATIONS AND EXCLUSIONS MAY NOT APPLY TO YOU. THIS WARRANTY GIVES YOU SPECIFIC LEGAL RIGHTS. YOU MAY HAVE OTHER RIGHTS, WHICH VARY FROM STATE TO STATE.



PUMPing Station RV05

***R*Vision LLC**

2365A Paragon Drive
San Jose, CA 95131

www.drayvision.com

S/N: _____

©1998-1999 by *R*Vision LLC. Printed in USA. Made in USA.
660061-01